

# SITE PLAN (1<sup>st</sup> Storey)

## ARRIVAL SANCTUARY

- 1 Welcome Boulevard
- 2 Arrival Court
- 3 Sculptural Courtyard
- 4 Grand Plaza
- 5 Grand Drop-off
- 6 Residential Services Counter
- 7 Water Cascades

## GRAND SANCTUARY

- 8 Grand Water Courtyard
- 9 Grand Lawn
- 10 Swing Garden
- 11 Serenity Deck
- 12 Serenity Sunken Lounge

## GRAND CLUB

- 13 Social Lounge
- 14 Function Room (2<sup>nd</sup> Storey)
- 15 Outdoor Deck (2<sup>nd</sup> Storey)

## TRANQUIL SANCTUARY

- 16 Forest Lounge
- 17 Tranquil Pavilion
- 18 Relaxation Pavilion
- 19 Jogging Trail
- 20 Tranquil Lawn
- 21 Pets Lawn

## LUSH SANCTUARY

- 22 Lush Sunken Lounge
- 23 Jet Pool
- 24 Kids Pool
- 25 Family Pool
- 26 Family Pool Deck
- 27 50m Infinity Pool
- 28 Gymnasium
- 29 Changing Room (with Steam Room)
- 30 Relaxation Pool Deck
- 31 Spa Alcove
- 32 Chill-out Lounge

## SOCIAL SANCTUARY

- 36 Social Lawn
- 37 BBQ Pavilion
- 38 Sensory Garden
- 39 Wellness Lawn
- 40 Outdoor Fitness
- 41 Forest Adventure
- 42 Lookout Lounge
- 43 Tennis Court (Basement 1)
- 44 Forest Pavilion (2<sup>nd</sup> Storey)
- 45 Party Pavilion (2<sup>nd</sup> Storey)
- 46 Social Pavilion (2<sup>nd</sup> Storey)
- 47 Treetop Walk (2<sup>nd</sup> Storey)

## ANCILLARY

- A Guardhouse
- B Substation (Basement 1)
- C Bin Centre (Basement 1)
- D Ventilation Shaft
- E Genset
- F Entrance to Basement
- G Carpark
- Side Gate
- Water Tank (Roof)

- 1-Bedroom + Study
- 2-Bedroom
- 2-Bedroom + Study
- 3-Bedroom

- 3-Bedroom Premium
- 3-Bedroom Premium + Study
- 4-Bedroom
- 5-Bedroom



The renderings of the units as shown are for illustrative purposes only. The shading and outline of the unit type only applies to typical units. The boundary lines of the units set out here are not to be taken as a factual representation of the actual units. Kindly refer to the approved BIP plans for the actual unit outline/boundary lines.

# 1-BEDROOM + STUDY

## Type A1S

48 sq m / 517 sq ft

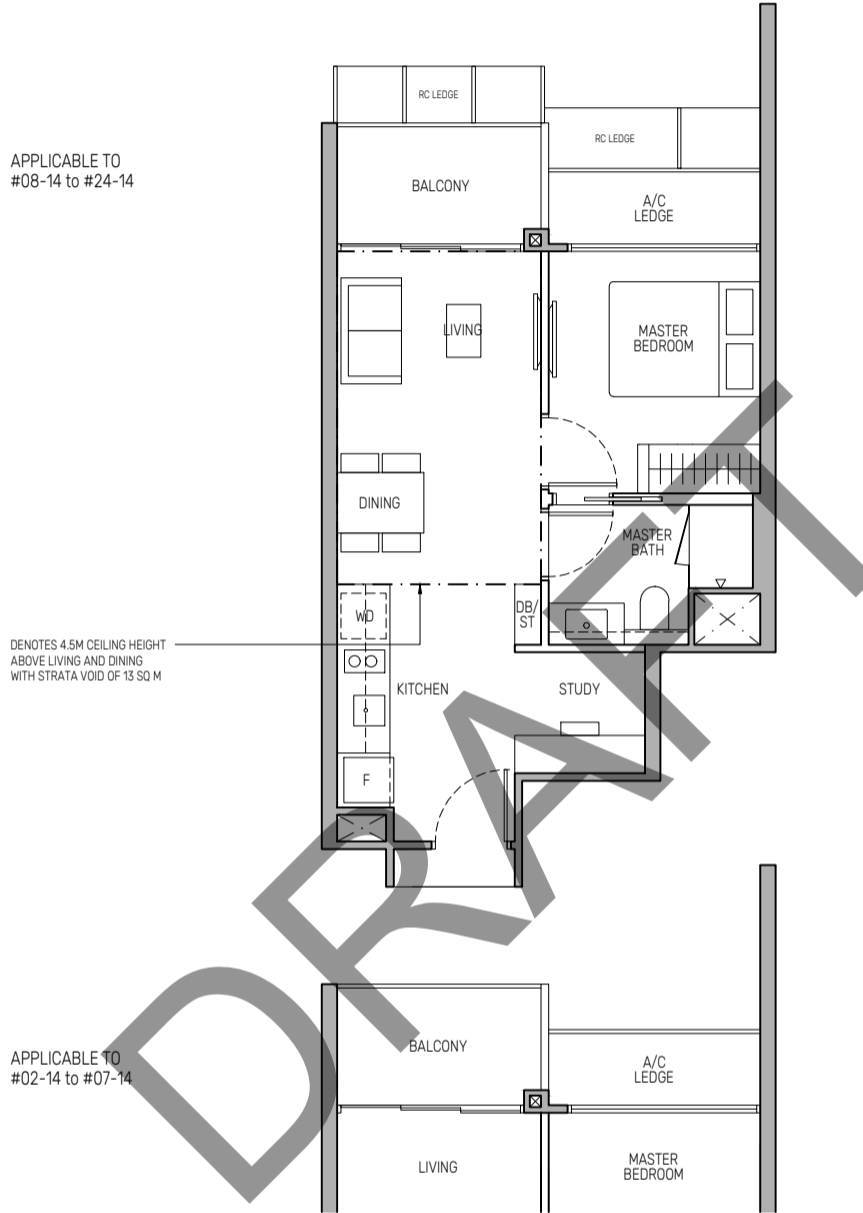
BLK 802 : #02-14 to #23-14

## Type A1S(d)

61 sq m / 657 sq ft

(includes 13 sq m of strata void above living and dining with 4.5m ceiling height)

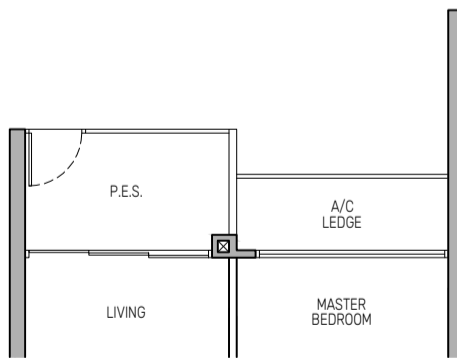
BLK 802 : #24-14



## Type A1S(p)

48 sq m / 517 sq ft

BLK 802 : #01-14



- Wall not allowed to be hacked or altered
- Mirror Image
- P.E.S. - Private Enclosed Space
- WD - Washer Cum Dryer
- WC - Water Closet
- HS - Household Shelter
- DB/ST - Distribution Board/Storage
- RC - Reinforced Concrete
- F - Fridge
- A/C - Air-Conditioner



Area includes air-conditioner (A/C) ledge, balcony and strata void area where applicable, and excludes among others, the RC - Reinforced Concrete Ledge. The demarcated strata void area is measured mid-wall to mid-wall. The plans are subject to change as may be approved by relevant authorities. All floor plans are approximate measurements only and are subject to final survey. The balcony shall not be enclosed unless with the approved balcony screen, more particularly illustrated under the header "Approved Balcony Screen".



Keyplan is not drawn to scale

# 1-BEDROOM + STUDY

Type A1Sa

48 sq m / 517 sq ft

BLK 802 : #02-13 to #23-13

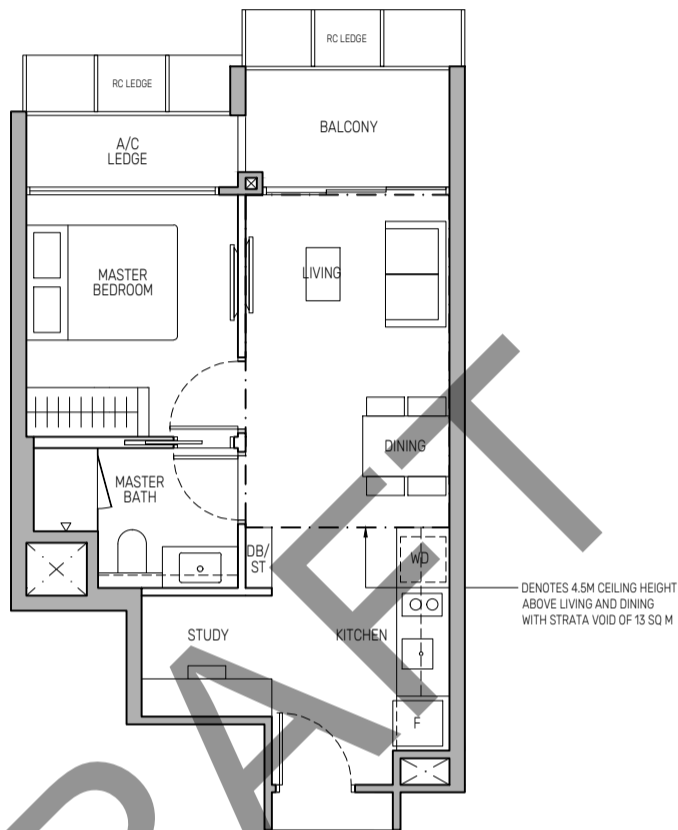
Type A1Sa(d)

61 sq m / 657 sq ft

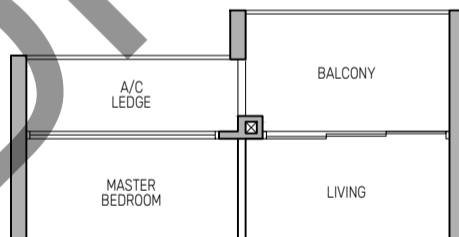
(includes 13 sq m of strata void above living and dining with 4.5m ceiling height)

BLK 802 : #24-13

APPLICABLE TO  
#08-13 to #24-13



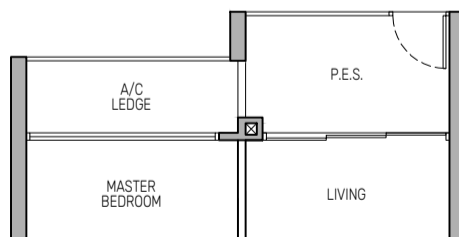
APPLICABLE TO  
#02-13 to #07-13



Type A1Sa(p)

48 sq m / 517 sq ft

BLK 802 : #01-13



- Wall not allowed to be hacked or altered
- Mirror Image
- P.E.S. - Private Enclosed Space
- WD - Washer Cum Dryer
- WC - Water Closet
- HS - Household Shelter
- DB/ST - Distribution Board/Storage
- RC - Reinforced Concrete
- F - Fridge
- A/C - Air-Conditioner



Area includes air-conditioner (A/C) ledge, balcony and strata void area where applicable, and excludes among others, the RC - Reinforced Concrete Ledge. The demarcated strata void area is measured mid-wall to mid-wall. The plans are subject to change as may be approved by relevant authorities. All floor plans are approximate measurements only and are subject to final survey. The balcony shall not be enclosed unless with the approved balcony screen, more particularly illustrated under the header "Approved Balcony Screen".



Keyplan is not drawn to scale

# 2-BEDROOM

## Type B1

63 sq m / 678 sq ft

BLK 800 : #02-01 to #23-01  
 BLK 802 : #02-09 to #23-09  
 BLK 802 : #02-12\* to #23-12\*

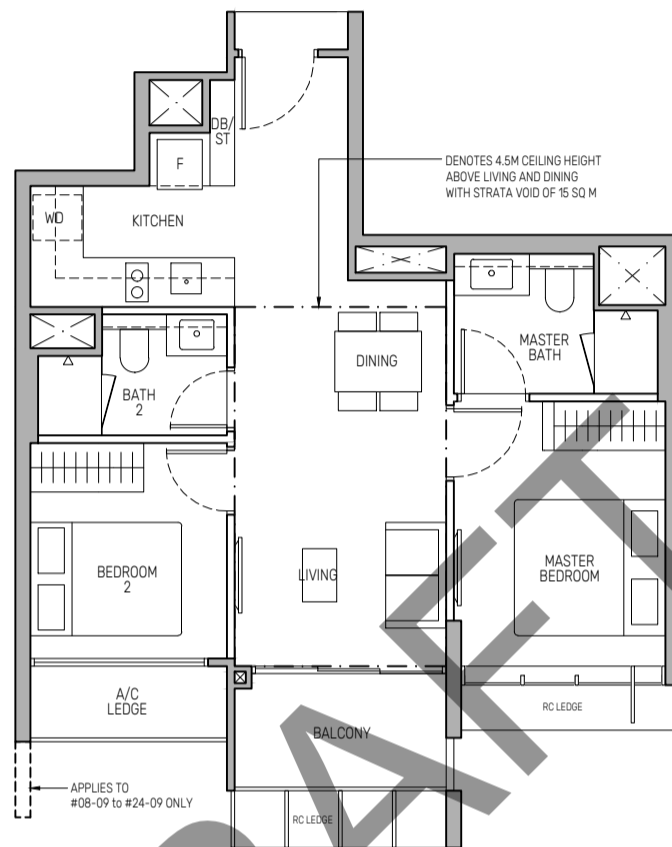
## Type B1(d)

78 sq m / 840 sq ft

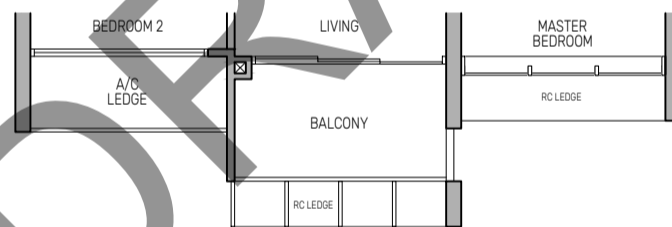
(includes 15 sq m of strata void above living and dining with 4.5m ceiling height)

BLK 800 : #24-01  
 BLK 802 : #24-09  
 BLK 802 : #24-12\*

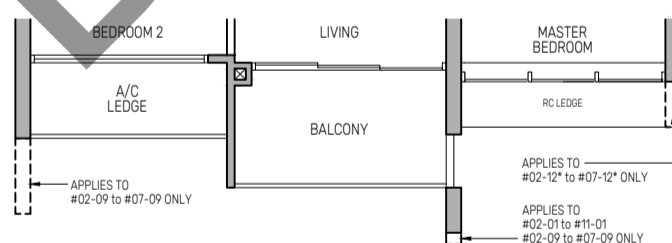
APPLICABLE TO  
 #12-01 to #24-01  
 #08-09 to #24-09



APPLICABLE TO  
 #08-12\* to #24-12\*



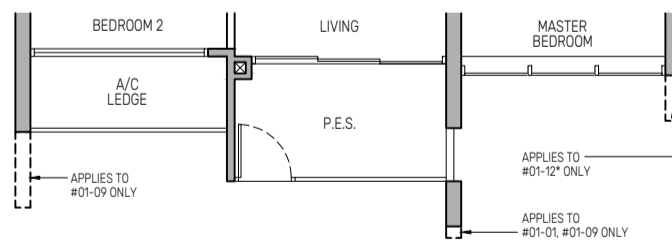
APPLICABLE TO  
 #02-01 to #11-01  
 #02-09 to #07-09  
 #02-12\* to #07-12\*



## Type B1(p)

63 sq m / 678 sq ft

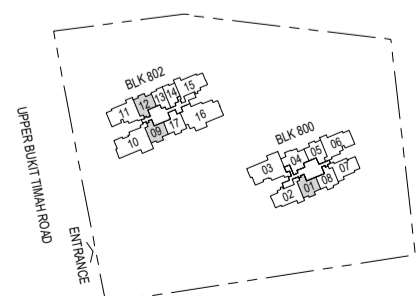
BLK 800 : #01-01  
 BLK 802 : #01-09  
 BLK 802 : #01-12\*



Wall not allowed to be hacked or altered  
 P.E.S. - Private Enclosed Space  
 WC - Water Closet  
 DB/ST - Distribution Board/Storage  
 F - Fridge  
 A/C - Air-Conditioner  
 \* Mirror Image  
 WD - Washer Cum Dryer  
 HS - Household Shelter  
 RC - Reinforced Concrete



Area includes air-conditioner (A/C) ledge, balcony and strata void area where applicable, and excludes among others, the RC - Reinforced Concrete Ledge. The demarcated strata void area is measured mid-wall to mid-wall. The plans are subject to change as may be approved by relevant authorities. All floor plans are approximate measurements only and are subject to final survey. The balcony shall not be enclosed unless with the approved balcony screen, more particularly illustrated under the header "Approved Balcony Screen".



Keyplan is not drawn to scale

# 2-BEDROOM

## Type B1a

63 sq m / 678 sq ft

BLK 800 : #02-08 to #23-08

## Type B1a(d)

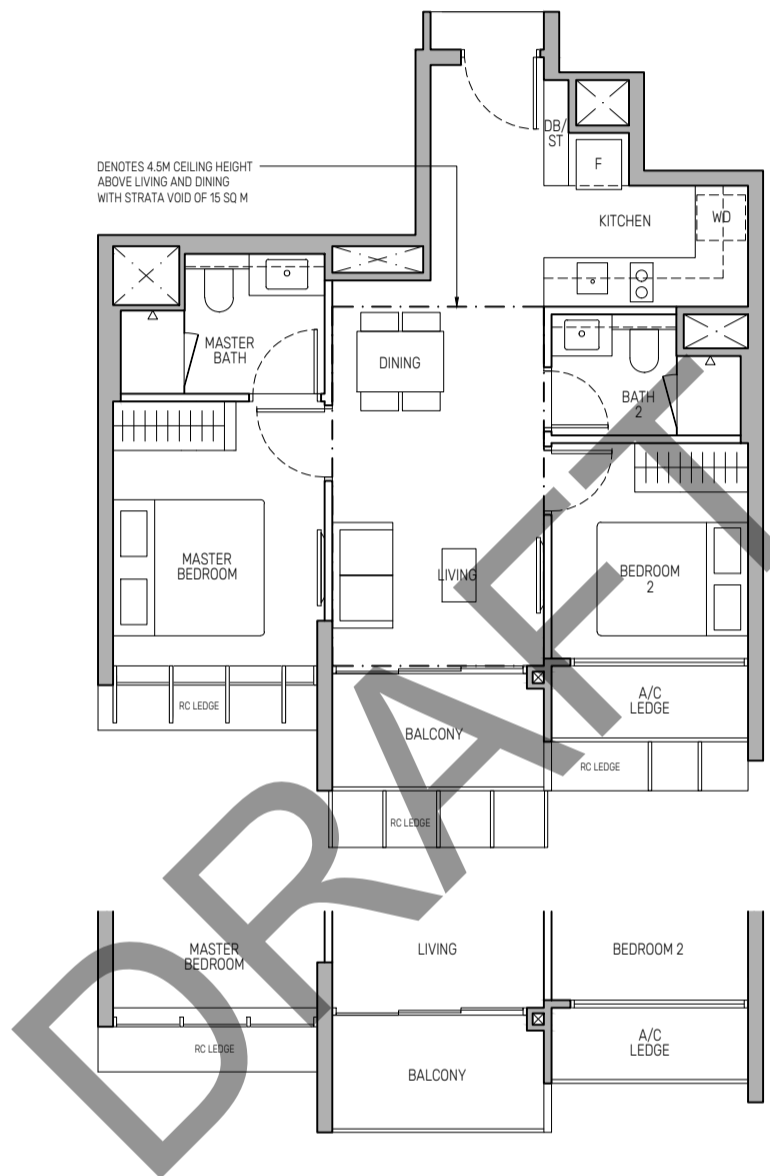
78 sq m / 840 sq ft

(includes 15 sq m of strata void above living and dining with 4.5m ceiling height)

BLK 800 : #24-08

APPLICABLE TO  
#12-08 to #24-08

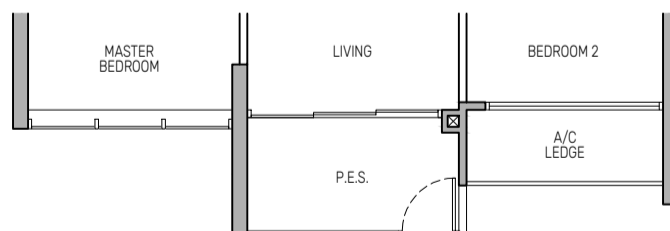
APPLICABLE TO  
#02-08 to #11-08



## Type B1a(p)

63 sq m / 678 sq ft

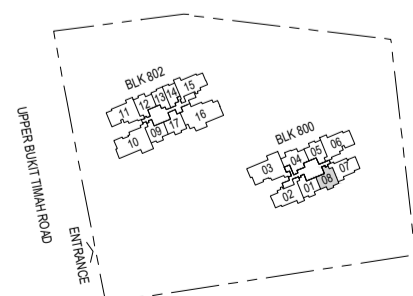
BLK 800 : #01-08



Wall not allowed to be hacked or altered  
• Mirror Image  
 P.E.S. - Private Enclosed Space  
 WD - Washer Cum Dryer  
 WC - Water Closet  
 HS - Household Shelter  
 DB/ST - Distribution Board/Storage  
 RC - Reinforced Concrete  
 F - Fridge  
 A/C - Air-Conditioner

0 0.5 1 2 3 5M

Area includes air-conditioner (A/C) ledge, balcony and strata void area where applicable, and excludes among others, the RC - Reinforced Concrete Ledge. The demarcated strata void area is measured mid-wall to mid-wall. The plans are subject to change as may be approved by relevant authorities. All floor plans are approximate measurements only and are subject to final survey. The balcony shall not be enclosed unless with the approved balcony screen, more particularly illustrated under the header "Approved Balcony Screen".



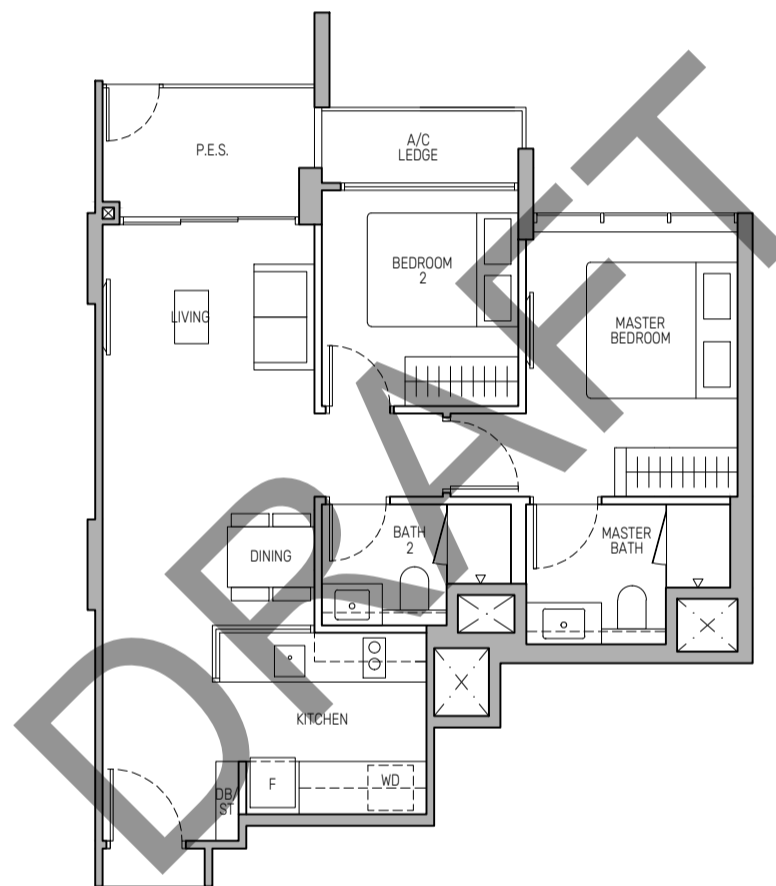
Keyplan is not drawn to scale

# 2-BEDROOM

Type B2(p)

68 sq m / 732 sq ft

BLK 800 : #01-04



- █ Wall not allowed to be hacked or altered
- Mirror Image
- P.E.S. - Private Enclosed Space
- WD - Washer Cum Dryer
- WC - Water Closet
- HS - Household Shelter
- DB/ST - Distribution Board/Storage
- RC - Reinforced Concrete
- F - Fridge
- A/C - Air-Conditioner



Area includes air-conditioner (A/C) ledge, balcony and strata void area where applicable, and excludes among others, the RC - Reinforced Concrete Ledge. The demarcated strata void area is measured mid-wall to mid-wall. The plans are subject to change as may be approved by relevant authorities. All floor plans are approximate measurements only and are subject to final survey. The balcony shall not be enclosed unless with the approved balcony screen, more particularly illustrated under the header "Approved Balcony Screen".



Keyplan is not drawn to scale

# 2-BEDROOM + STUDY

## Type B3S

65 sq m / 700 sq ft

BLK 800 : #02-05\* to #23-05\*

BLK 802 : #02-17 to #23-17

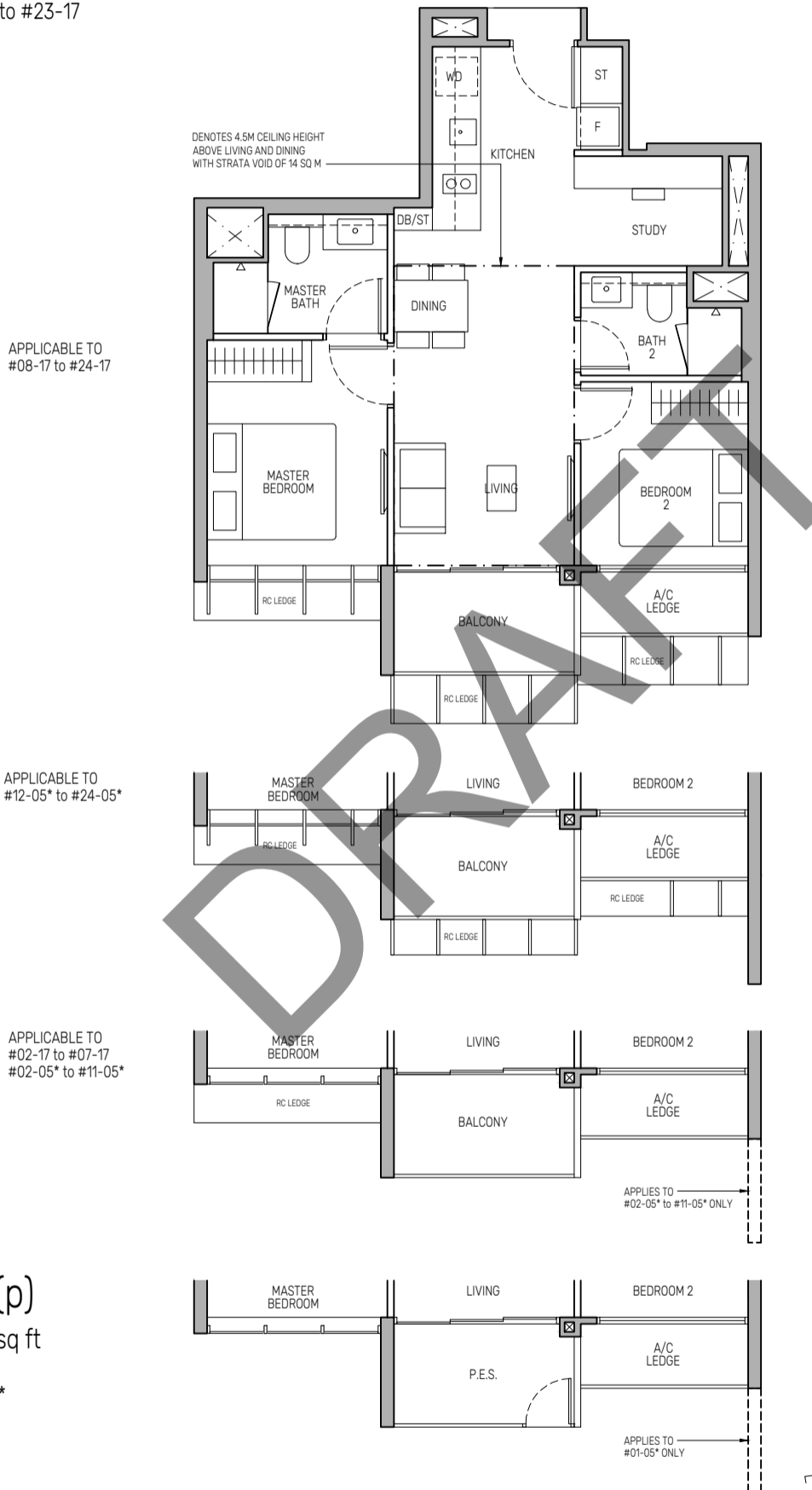
## Type B3S(d)

79 sq m / 850 sq ft

(includes 14 sq m of strata void above living and dining with 4.5m ceiling height)

BLK 800 : #24-05\*

BLK 802 : #24-17



## Type B3S(p)

65 sq m / 700 sq ft

BLK 800 : #01-05\*

BLK 802 : #01-17

- Wall not allowed to be hacked or altered
- P.E.S. - Private Enclosed Space
- WC - Water Closet
- DB/ST - Distribution Board/Storage
- F - Fridge
- Mirror Image
- WD - Washer Cum Dryer
- HS - Household Shelter
- RC - Reinforced Concrete
- A/C - Air-Conditioner



Area includes air-conditioner (A/C) ledge, balcony and strata void area where applicable, and excludes among others, the RC - Reinforced Concrete Ledge. The demarcated strata void area is measured mid-wall to mid-wall. The plans are subject to change as may be approved by relevant authorities. All floor plans are approximate measurements only and are subject to final survey. The balcony shall not be enclosed unless with the approved balcony screen, more particularly illustrated under the header "Approved Balcony Screen".



Keyplan is not drawn to scale

# 3-BEDROOM

## Type C1

79 sq m / 850 sq ft

BLK 800 : #02-04 to #23-04

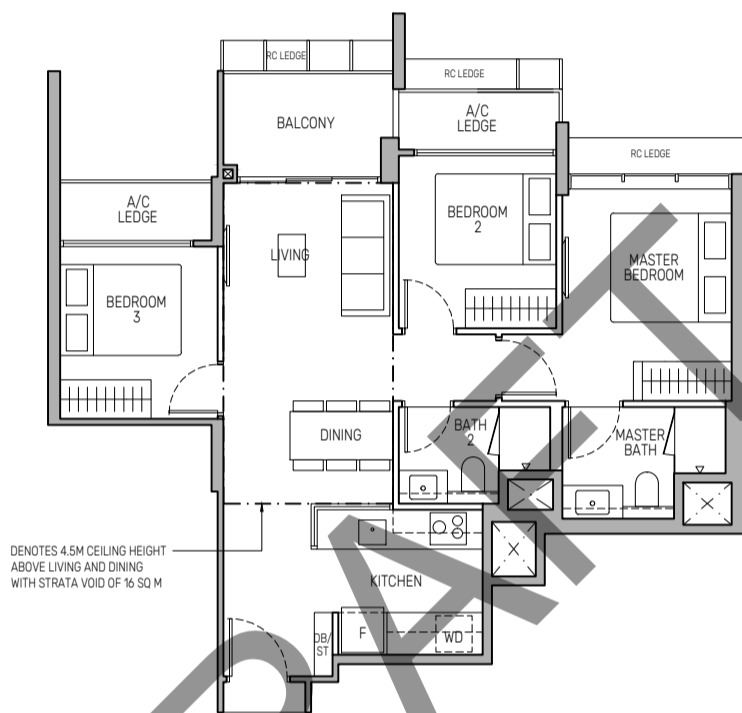
## Type C1(d)

95 sq m / 1023 sq ft

(includes 16 sq m of strata void above living and dining with 4.5m ceiling height)

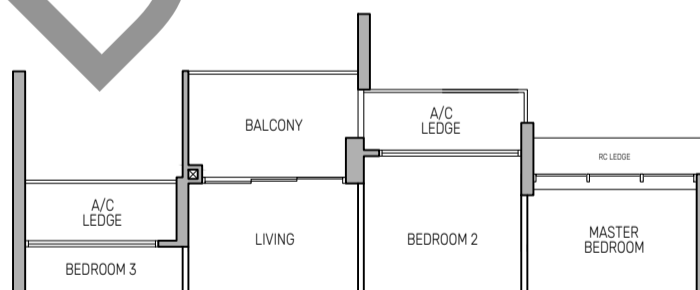
BLK 800 : #24-04

APPLICABLE TO  
#12-04 to #24-04



DENOTES 4.5M CEILING HEIGHT  
ABOVE LIVING AND DINING  
WITH STRATA VOID OF 16 SQ M

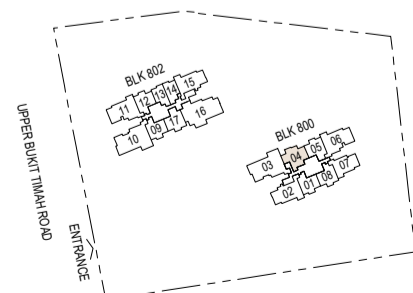
APPLICABLE TO  
#02-04 to #11-04



- █ Wall not allowed to be hacked or altered
- Mirror Image
- P.E.S. - Private Enclosed Space
- WD - Washer Cum Dryer
- WC - Water Closet
- HS - Household Shelter
- DB/ST - Distribution Board/Storage
- RC - Reinforced Concrete
- F - Fridge
- A/C - Air-Conditioner



Area includes air-conditioner (A/C) ledge, balcony and strata void area where applicable, and excludes among others, the RC - Reinforced Concrete Ledge. The demarcated strata void area is measured mid-wall to mid-wall. The plans are subject to change as may be approved by relevant authorities. All floor plans are approximate measurements only and are subject to final survey. The balcony shall not be enclosed unless with the approved balcony screen, more particularly illustrated under the header "Approved Balcony Screen".



Keyplan is not drawn to scale



# 3-BEDROOM

## Type C2

85 sq m / 915 sq ft

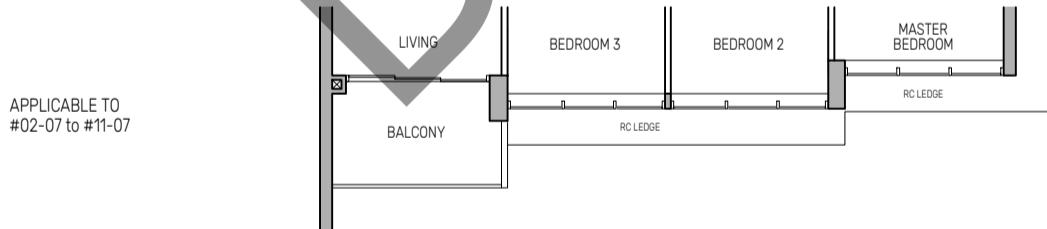
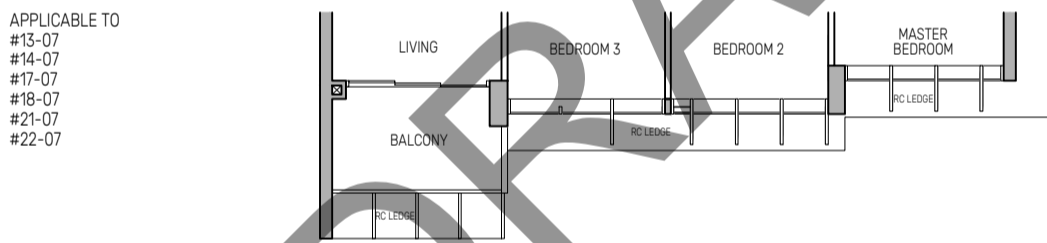
BLK 800 : #02-07 to #23-07

## Type C2(d)

99 sq m / 1066 sq ft

(includes 14 sq m of strata void above living and dining with 4.5m ceiling height)

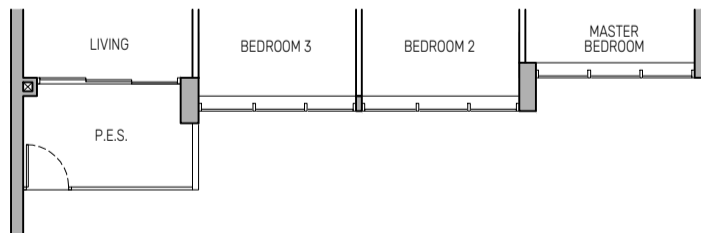
BLK 800 : #24-07



## Type C2(p)

85 sq m / 915 sq ft

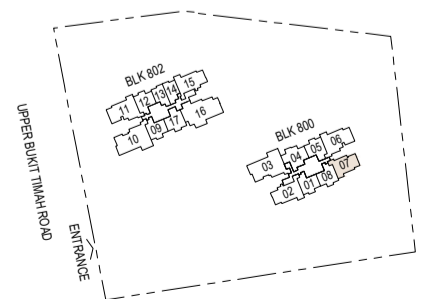
BLK 800 : #01-07



Wall not allowed to be hacked or altered  
• Mirror Image  
 P.E.S. - Private Enclosed Space  
 WD - Washer Cum Dryer  
 WC - Water Closet  
 HS - Household Shelter  
 DB/ST - Distribution Board/Storage  
 RC - Reinforced Concrete  
 F - Fridge  
 A/C - Air-Conditioner

0 0.5 1 2 3 5M

Area includes air-conditioner (A/C) ledge, balcony and strata void area where applicable, and excludes others, the RC - Reinforced Concrete Ledge. The demarcated strata void area is measured mid-wall to mid-wall. The plans are subject to change as may be approved by relevant authorities. All floor plans are approximate measurements only and are subject to final survey. The balcony shall not be enclosed unless with the approved balcony screen, more particularly illustrated under the header "Approved Balcony Screen".



Keyplan is not drawn to scale

# 3-BEDROOM PREMIUM

Type C3P

96 sq m / 1033 sq ft

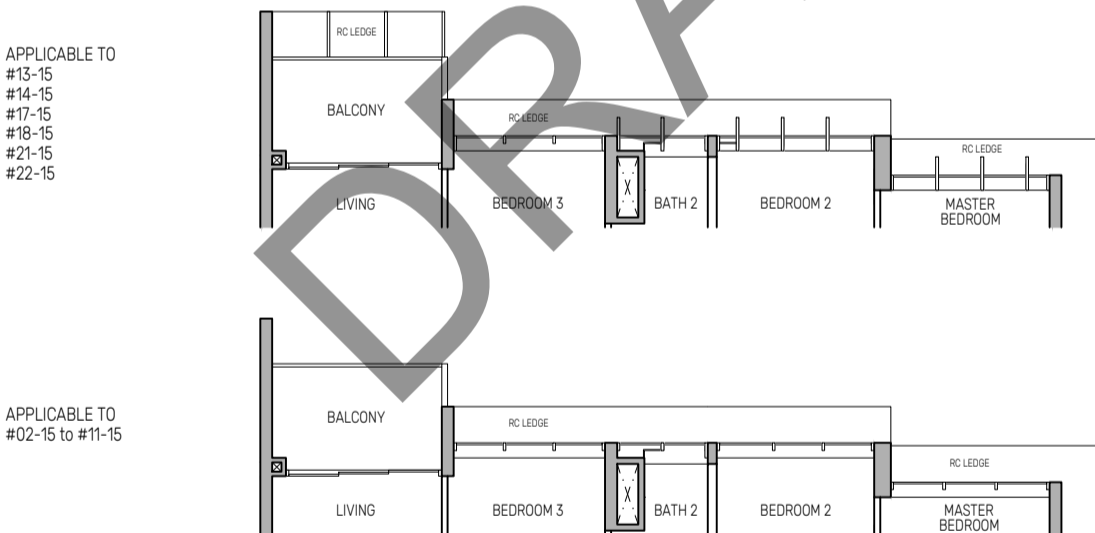
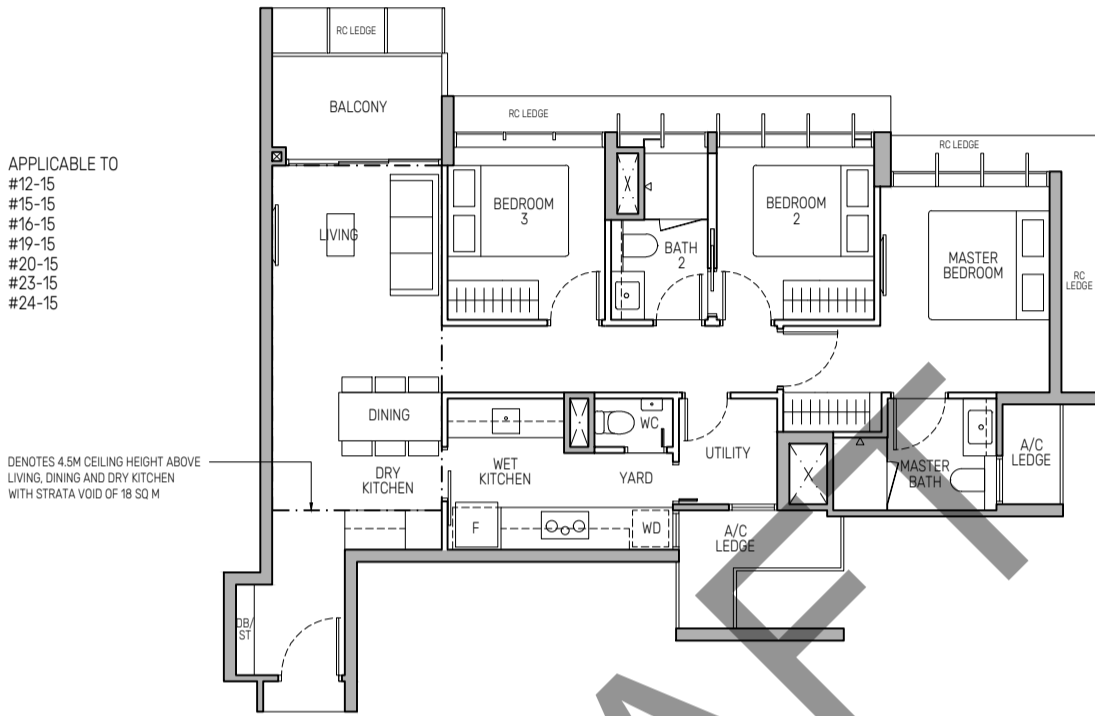
BLK 802 : #02-15 to #23-15

Type C3P(d)

114 sq m / 1227 sq ft

(includes 18 sq m of strata void above living, dining and dry kitchen with 4.5m ceiling height)

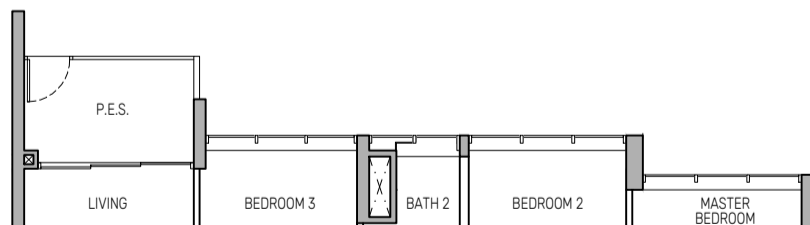
BLK 802 : #24-15



Type C3P(p)

96 sq m / 1033 sq ft

BLK 802 : #01-15



Wall not allowed to be hacked or altered  
• Mirror Image  
 P.E.S. - Private Enclosed Space  
 WD - Washer Cum Dryer  
 WC - Water Closet  
 HS - Household Shelter  
 DB/ST - Distribution Board/Storage  
 RC - Reinforced Concrete  
 F - Fridge  
 A/C - Air-Conditioner

0 0.5 1 2 3 5M

Area includes air-conditioner (A/C) ledge, balcony and strata void area where applicable, and excludes among others, the RC - Reinforced Concrete Ledge. The demarcated strata void area is measured mid-wall to mid-wall. The plans are subject to change as may be approved by relevant authorities. All floor plans are approximate measurements only and are subject to final survey. The balcony shall not be enclosed unless with the approved balcony screen, more particularly illustrated under the header "Approved Balcony Screen".



Keyplan is not drawn to scale

# 3-BEDROOM PREMIUM

Type C3Pa

96 sq m / 1033 sq ft

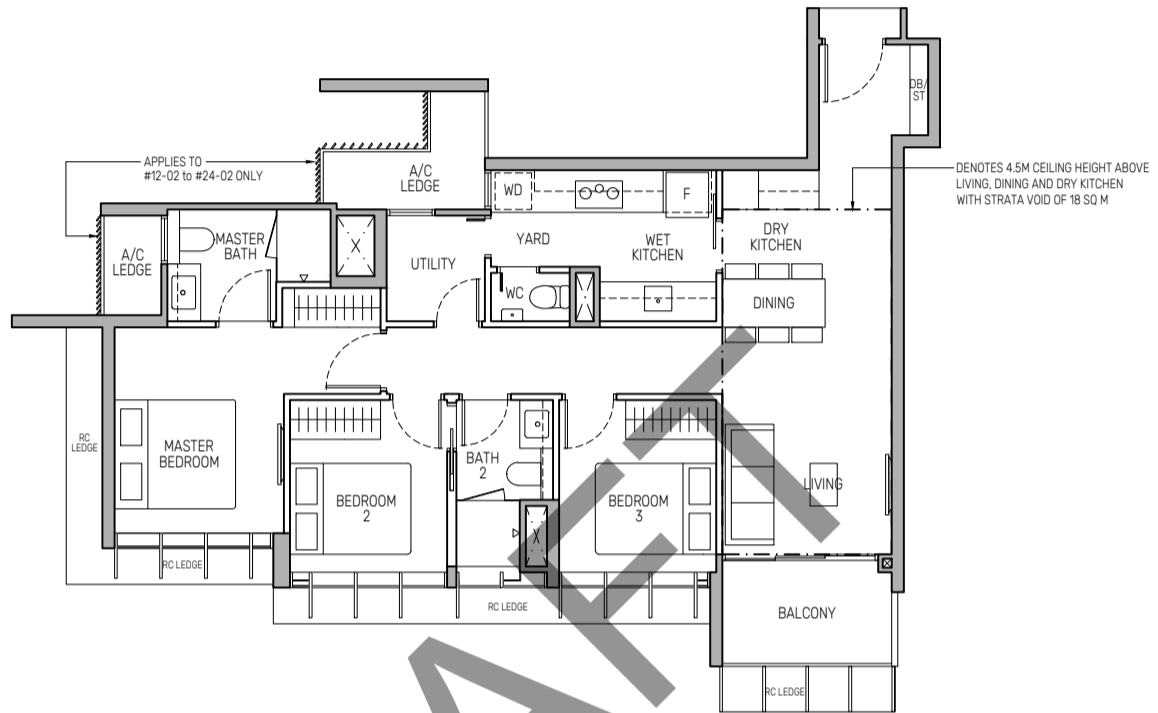
BLK 800 : #02-02 to #23-02

Type C3Pa(d)

114 sq m / 1227 sq ft

(includes 18 sq m of strata void above living, dining and dry kitchen with 4.5m ceiling height)

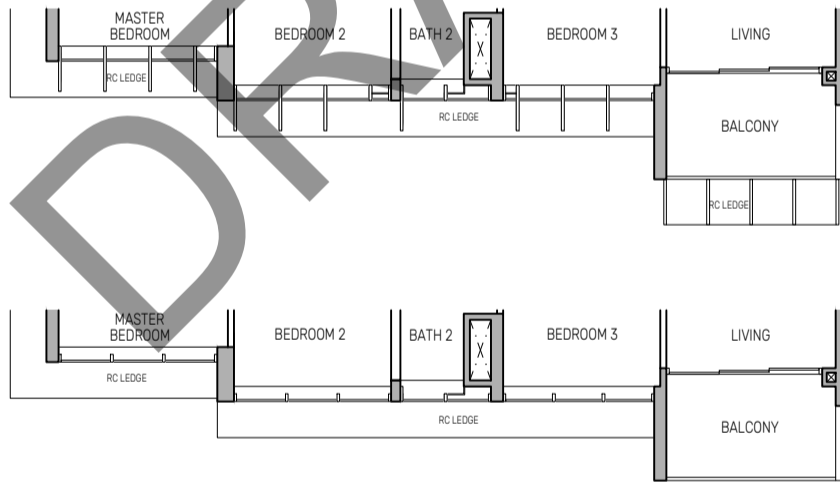
BLK 800 : #24-02



APPLICABLE TO  
#12-02  
#15-02  
#16-02  
#19-02  
#20-02  
#23-02  
#24-02

APPLICABLE TO  
#13-02  
#14-02  
#17-02  
#18-02  
#21-02  
#22-02

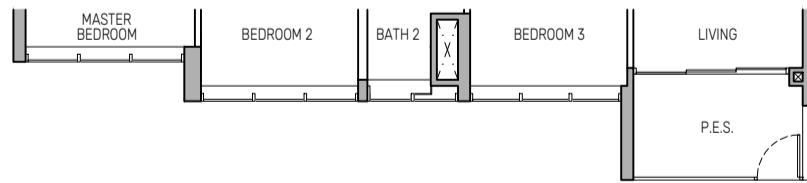
APPLICABLE TO  
#02-02 to #11-02



Type C3Pa(p)

96 sq m / 1033 sq ft

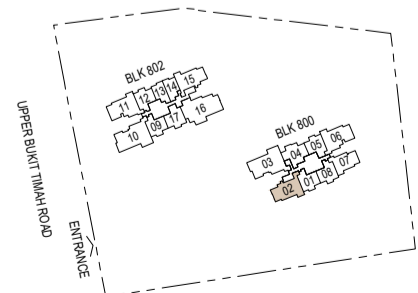
BLK 800 : #01-02



- Wall not allowed to be hacked or altered
- Mirror Image
- P.E.S. - Private Enclosed Space
- WD - Washer Cum Dryer
- WC - Water Closet
- HS - Household Shelter
- DB/ST - Distribution Board/Storage
- RC - Reinforced Concrete
- F - Fridge
- A/C - Air-Conditioner



Area includes air-conditioner (A/C) ledge, balcony and strata void area where applicable, and excludes among others, the RC - Reinforced Concrete Ledge. The demarcated strata void area is measured mid-wall to mid-wall. The plans are subject to change as may be approved by relevant authorities. All floor plans are approximate measurements only and are subject to final survey. The balcony shall not be enclosed unless with the approved balcony screen, more particularly illustrated under the header "Approved Balcony Screen".



Keyplan is not drawn to scale

# 3-BEDROOM PREMIUM + STUDY

Type C4PS

108 sq m / 1163 sq ft

BLK 802 : #02-11 to #23-11

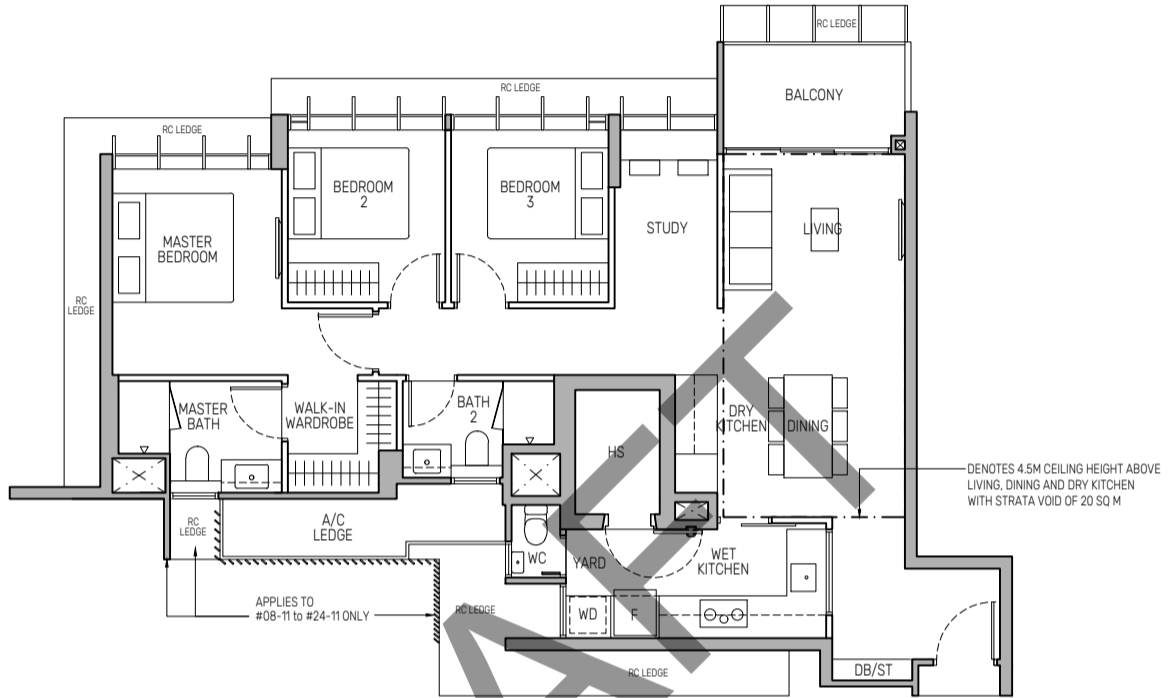
Type C4PS(d)

128 sq m / 1378 sq ft

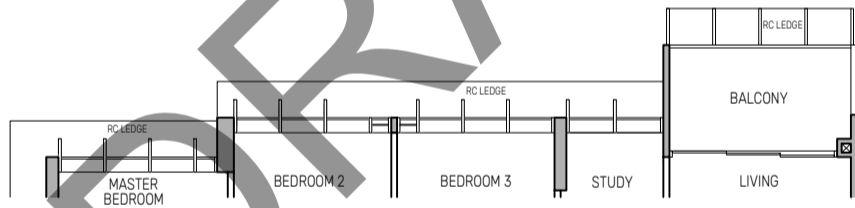
(includes 20 sq m of strata void above living, dining and dry kitchen with 4.5m ceiling height)

BLK 802 : #24-11

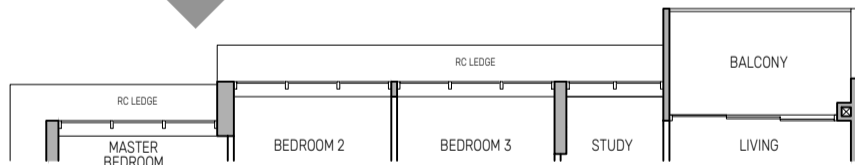
APPLICABLE TO  
#08-11  
#11-11  
#12-11  
#15-11  
#16-11  
#19-11  
#20-11  
#23-11  
#24-11



APPLICABLE TO  
#09-11  
#10-11  
#13-11  
#14-11  
#17-11  
#18-11  
#21-11  
#22-11



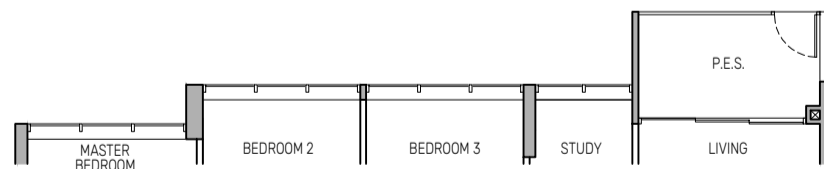
APPLICABLE TO  
#02-11 to #07-11



Type C4PS(p)

108 sq m / 1163 sq ft

BLK 802 : #01-11



Wall not allowed to be hacked or altered  
• Mirror Image  
 P.E.S. - Private Enclosed Space  
 WD - Washer Cum Dryer  
 WC - Water Closet  
 HS - Household Shelter  
 DB/ST - Distribution Board/Storage  
 RC - Reinforced Concrete  
 F - Fridge  
 A/C - Air-Conditioner



Area includes air-conditioner (A/C) ledge, balcony and strata void area where applicable, and excludes among others, the RC - Reinforced Concrete Ledge. The demarcated strata void area is measured mid-wall to mid-wall. The plans are subject to change as may be approved by relevant authorities. All floor plans are approximate measurements only and are subject to final survey. The balcony shall not be enclosed unless with the approved balcony screen, more particularly illustrated under the header "Approved Balcony Screen".



Keyplan is not drawn to scale

# 3-BEDROOM PREMIUM + STUDY

Type C4PSa  
108 sq m / 1163 sq ft

BLK 800 : #02-06 to #23-06

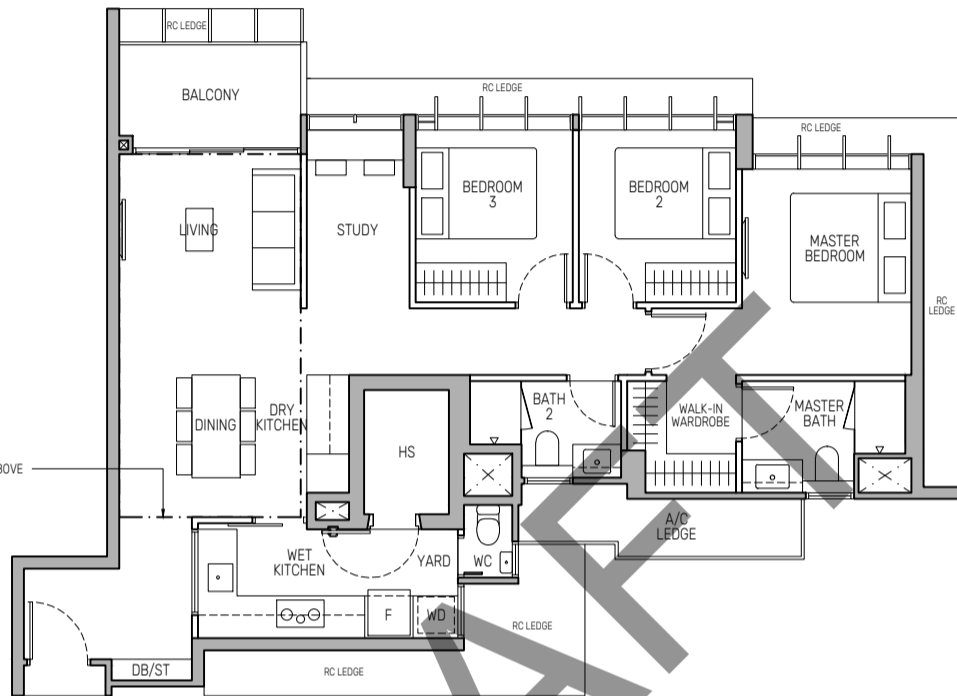
Type C4PSa(d)

128 sq m / 1378 sq ft  
(includes 20 sq m of strata void above living, dining and dry kitchen with 4.5m ceiling height)

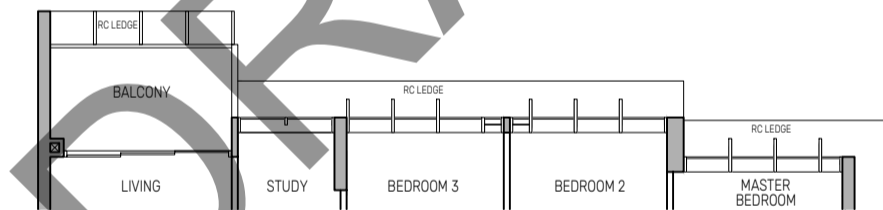
BLK 800 : #24-06

APPLICABLE TO  
#12-06  
#15-06  
#16-06  
#19-06  
#20-06  
#23-06  
#24-06

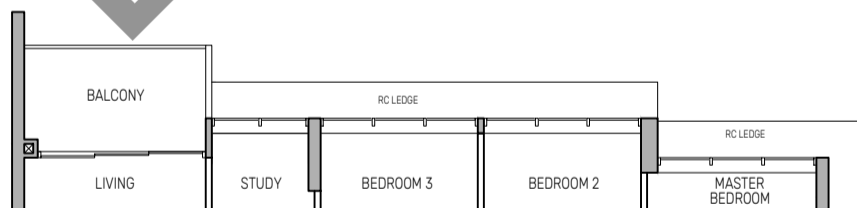
DENOTES 4.5M CEILING HEIGHT ABOVE LIVING, DINING AND DRY KITCHEN WITH STRATA VOID OF 20 SQ M



APPLICABLE TO  
#13-06  
#14-06  
#17-06  
#18-06  
#21-06  
#22-06

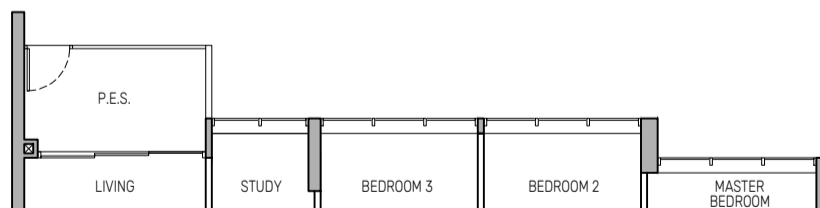


APPLICABLE TO  
#02-06 to #11-06



Type C4PSa(p)  
108 sq m / 1163 sq ft

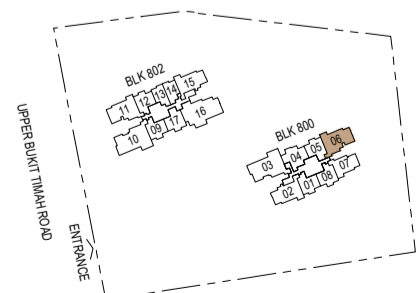
BLK 800 : #01-06



Wall not allowed to be hacked or altered  
 Mirror Image  
 P.E.S. - Private Enclosed Space  
 WD - Washer Cum Dryer  
 WC - Water Closet  
 HS - Household Shelter  
 DB/ST - Distribution Board/Storage  
 RC - Reinforced Concrete  
 F - Fridge  
 A/C - Air-Conditioner



Area includes air-conditioner (A/C) ledge, balcony and strata void area where applicable, and excludes among others, the RC - Reinforced Concrete Ledge. The demarcated strata void area is measured mid-wall to mid-wall. The plans are subject to change as may be approved by relevant authorities. All floor plans are approximate measurements only and are subject to final survey. The balcony shall not be enclosed unless with the approved balcony screen, more particularly illustrated under the header "Approved Balcony Screen".



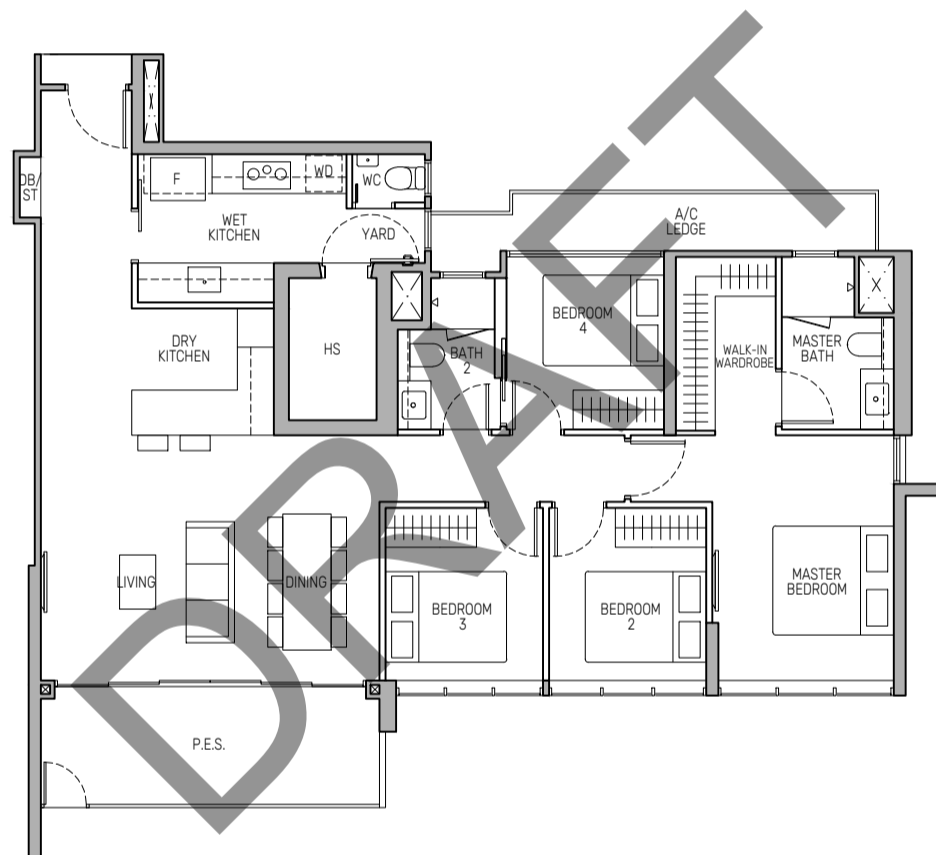
Keyplan is not drawn to scale

# 4-BEDROOM

Type D1(p)

135 sq m / 1453 sq ft

BLK 802 : #01-16



Wall not allowed to be hacked or altered  
• Mirror Image  
 P.E.S. - Private Enclosed Space  
 WD - Washer Cum Dryer  
 WC - Water Closet  
 HS - Household Shelter  
 DB/ST - Distribution Board/Storage  
 RC - Reinforced Concrete  
 F - Fridge  
 A/C - Air-Conditioner



Area includes air-conditioner (A/C) ledge, balcony and strata void area where applicable, and excludes among others, the RC - Reinforced Concrete Ledge. The demarcated strata void area is measured mid-wall to mid-wall. The plans are subject to change as may be approved by relevant authorities. All floor plans are approximate measurements only and are subject to final survey. The balcony shall not be enclosed unless with the approved balcony screen, more particularly illustrated under the header "Approved Balcony Screen".



Keyplan is not drawn to scale

# 4-BEDROOM

Type D2

141 sq m / 1518 sq ft

BLK 800 : #02-03 to #23-03

Type D2(d)

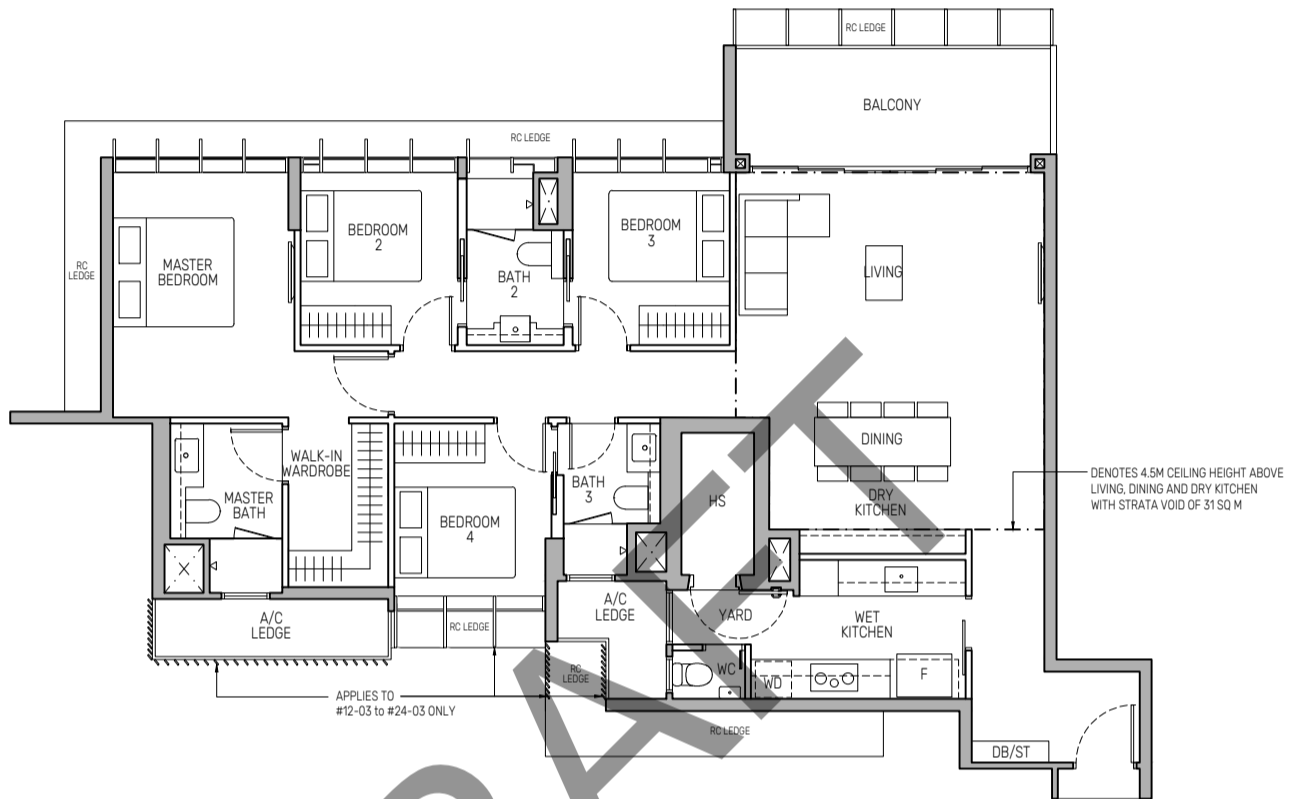
172 sq m / 1851 sq ft

(includes 31 sq m of strata void above living, dining and dry kitchen with 4.5m ceiling height)

BLK 800 : #24-03

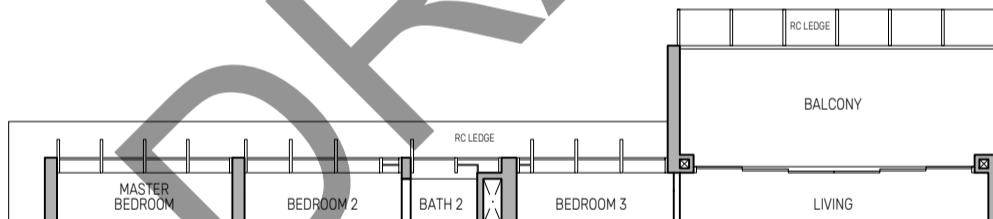
APPLICABLE TO

- #12-03
- #15-03
- #16-03
- #19-03
- #20-03
- #23-03
- #24-03

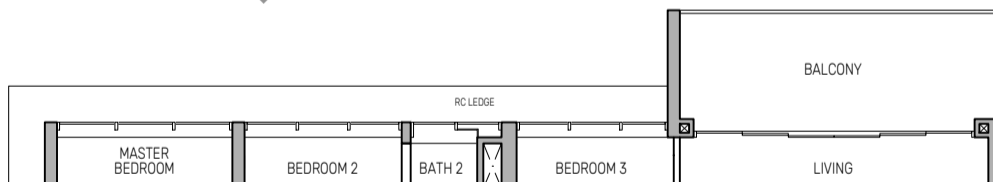


APPLICABLE TO

- #13-03
- #14-03
- #17-03
- #18-03
- #21-03
- #22-03



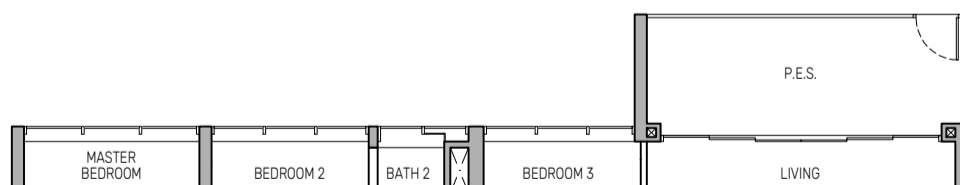
APPLICABLE TO  
#02-03 to #11-03



Type D2(p)

141 sq m / 1518 sq ft

BLK 800 : #01-03



- Wall not allowed to be hacked or altered
- P.E.S. - Private Enclosed Space
- WC - Water Closet
- DB/ST - Distribution Board/Storage
- F - Fridge
- Mirror Image
- WD - Washer Cum Dryer
- HS - Household Shelter
- RC - Reinforced Concrete
- A/C - Air-Conditioner



Area includes air-conditioner (A/C) ledge, balcony and strata void area where applicable, and excludes among others, the RC - Reinforced Concrete Ledge. The demarcated strata void area is measured mid-wall to mid-wall. The plans are subject to change as may be approved by relevant authorities. All floor plans are approximate measurements only and are subject to final survey. The balcony shall not be enclosed unless with the approved balcony screen, more particularly illustrated under the header "Approved Balcony Screen".



Keyplan is not drawn to scale

# 4-BEDROOM

## Type D2

141 sq m / 1518 sq ft

BLK 802 : #02-10 to #23-10

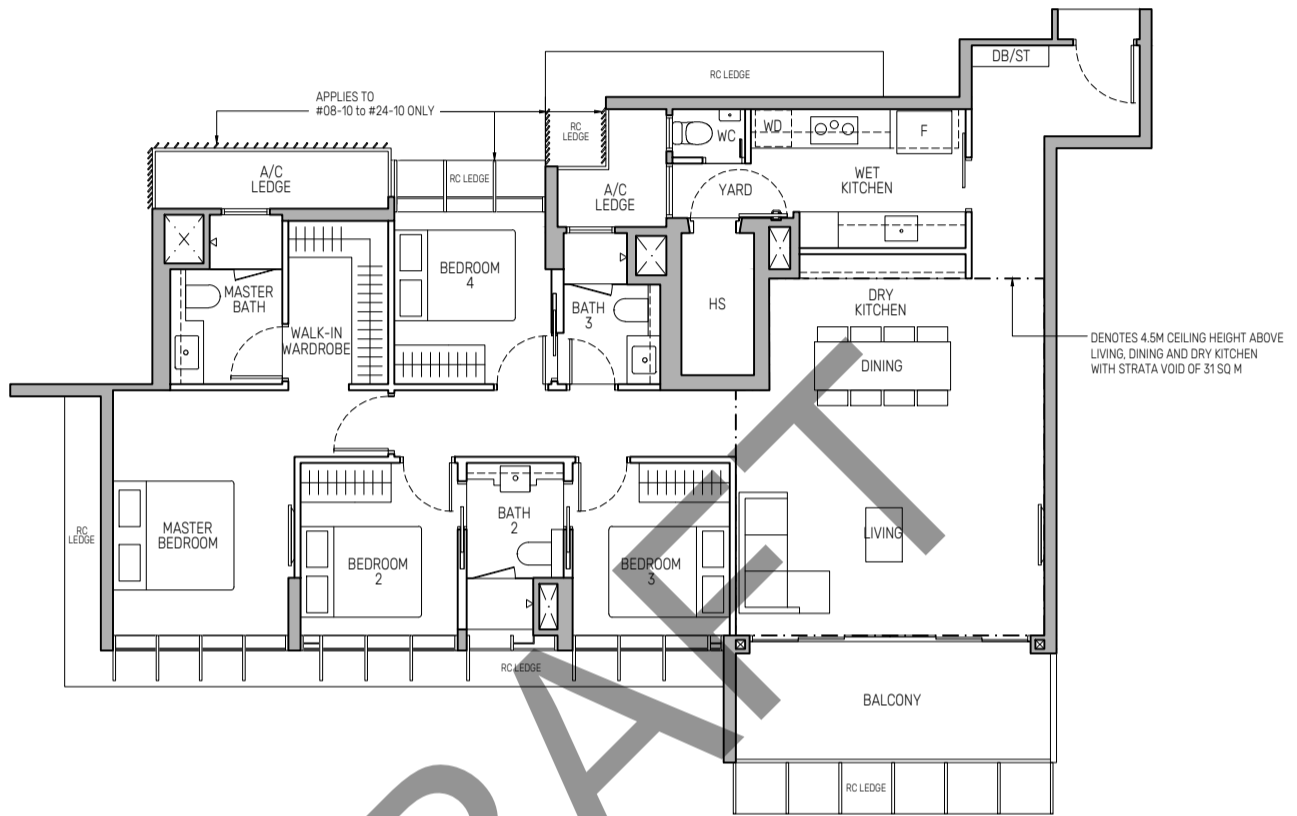
## Type D2(d)

172 sq m / 1851 sq ft

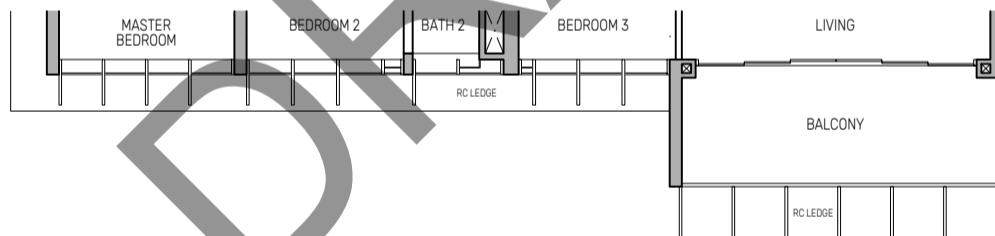
(includes 31 sq m of strata void above living, dining and dry kitchen with 4.5m ceiling height)

BLK 802 : #24-10

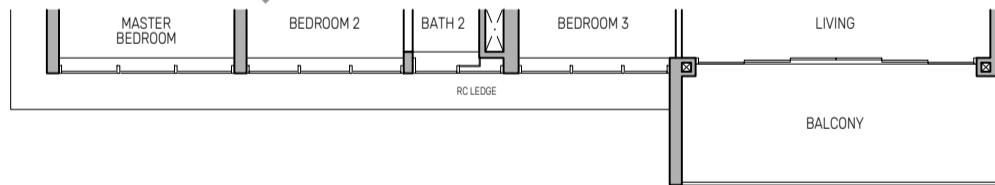
APPLICABLE TO  
#08-10  
#11-10  
#12-10  
#15-10  
#16-10  
#19-10  
#20-10  
#23-10  
#24-10



APPLICABLE TO  
#09-10  
#10-10  
#13-10  
#14-10  
#17-10  
#18-10  
#21-10  
#22-10



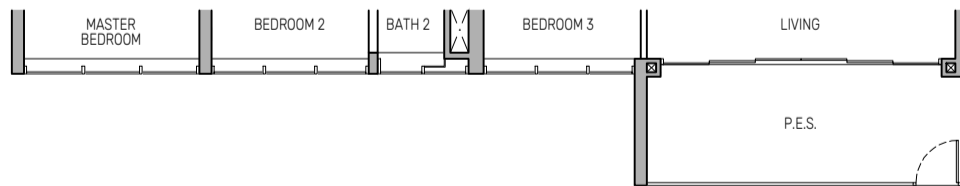
APPLICABLE TO  
#02-10 to #07-10



## Type D2(p)

141 sq m / 1518 sq ft

BLK 802 : #01-10



Wall not allowed to be hacked or altered  
• Mirror Image  
 P.E.S. - Private Enclosed Space  
 WD - Washer Cum Dryer  
 WC - Water Closet  
 HS - Household Shelter  
 DB/ST - Distribution Board/Storage  
 RC - Reinforced Concrete  
 F - Fridge  
 A/C - Air-Conditioner



Area includes air-conditioner (A/C) ledge, balcony and strata void area where applicable, and excludes among others, the RC - Reinforced Concrete Ledge. The demarcated strata void area is measured mid-wall to mid-wall. The plans are subject to change as may be approved by relevant authorities. All floor plans are approximate measurements only and are subject to final survey. The balcony shall not be enclosed unless with the approved balcony screen, more particularly illustrated under the header "Approved Balcony Screen".



Keyplan is not drawn to scale



# 5-BEDROOM

Type E1

157 sq m / 1690 sq ft

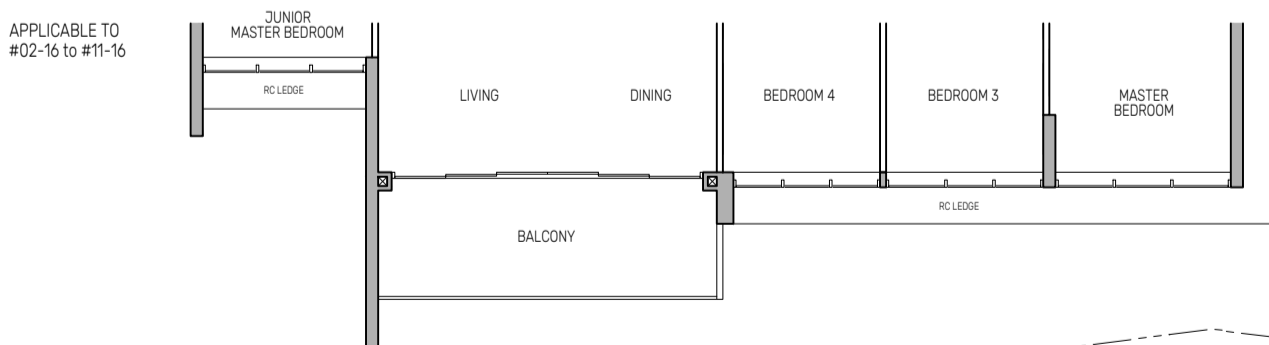
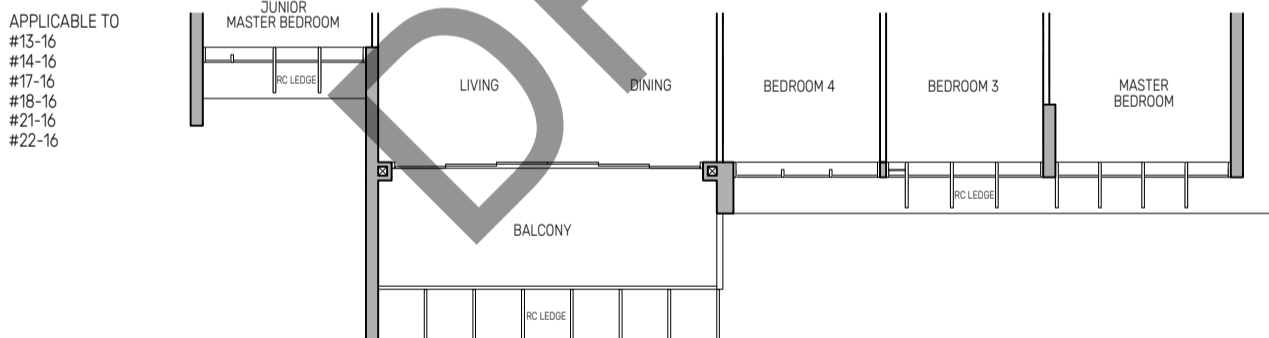
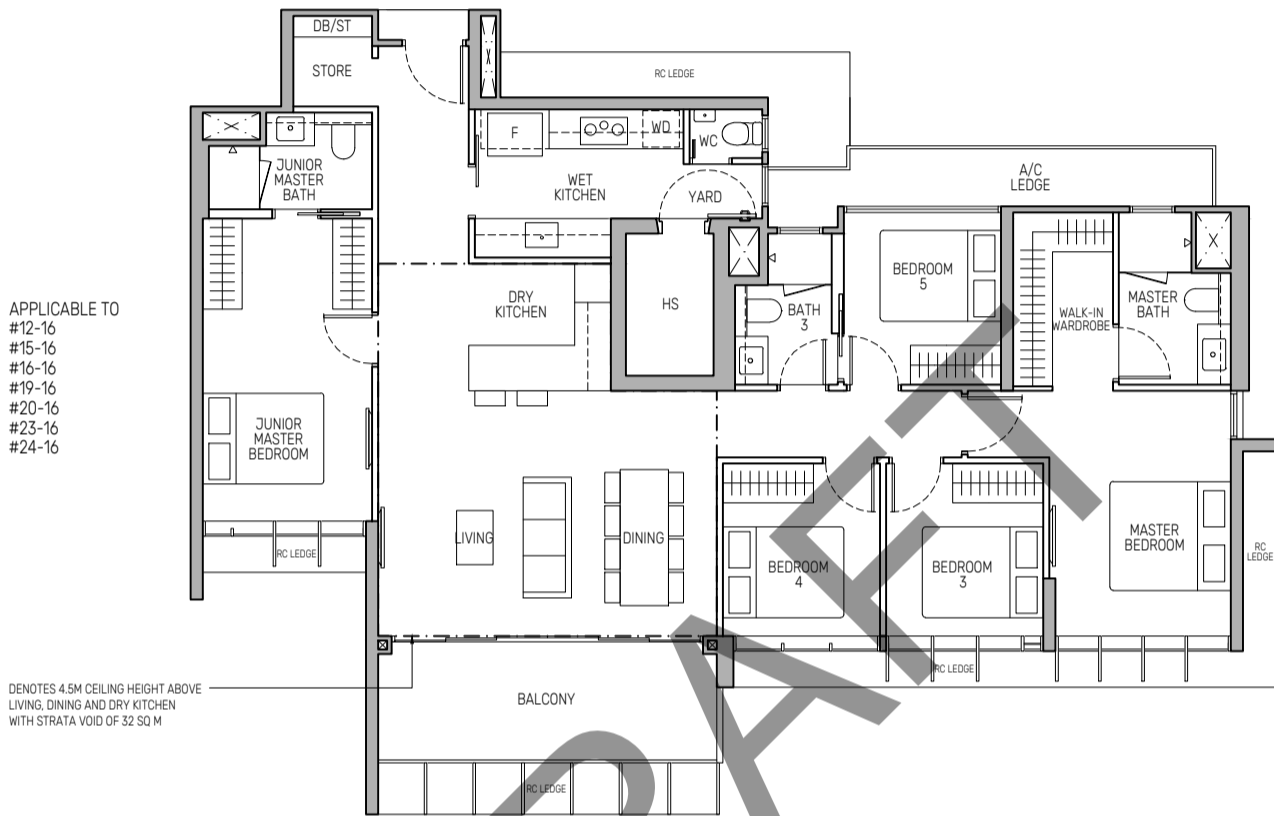
BLK 802 : #02-16 to #23-16

Type E1(d)

189 sq m / 2034 sq ft

(includes 32 sq m of strata void above living, dining and dry kitchen with 4.5m ceiling height)

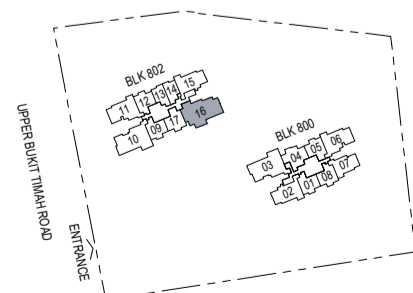
BLK 802 : #24-16



Wall not allowed to be hacked or altered  
 Mirror Image  
 P.E.S. - Private Enclosed Space  
 WD - Washer Cum Dryer  
 WC - Water Closet  
 HS - Household Shelter  
 DB/ST - Distribution Board/Storage  
 RC - Reinforced Concrete  
 F - Fridge  
 A/C - Air-Conditioner



Area includes air-conditioner (A/C) ledge, balcony and strata void area where applicable, and excludes among others, the RC - Reinforced Concrete Ledge. The demarcated strata void area is measured mid-wall to mid-wall. The plans are subject to change as may be approved by relevant authorities. All floor plans are approximate measurements only and are subject to final survey. The balcony shall not be enclosed unless with the approved balcony screen, more particularly illustrated under the header "Approved Balcony Screen".



Keyplan is not drawn to scale